

921063000

ROUGH COUNTRY

SUSPENSION SYSTEMS®

JEEP 2007-18 JK WRANGLER / 21 FORD BRONCO Tail Gate Table

Thank you for choosing Rough Country for all your vehicle needs.

Please read instructions before beginning installation. Check the kit hardware against the kit contents shown below. Be sure you have all needed parts and know where they go.

If question exist, please call us @1-800-222-7023. We will be happy to answer any questions concerning this product.

Check all fasteners for proper torque. Check to ensure for adequate clearance between all components.

Periodically check all hardware for tightness.

KIT CONTENTS:

Tailgate Table

TOOLS NEEDED:

Scissors
5mm Allen Wrench
Center Punch
11/32 Bit
Drill Motor
7/16 Socket
Ratchet

HARDWARE INCLUDED:

6mm x 25mm x4
6mm Nutserts x4
Rubber Snubbers x2
Snubber Sleeve x2



Torque Specs:

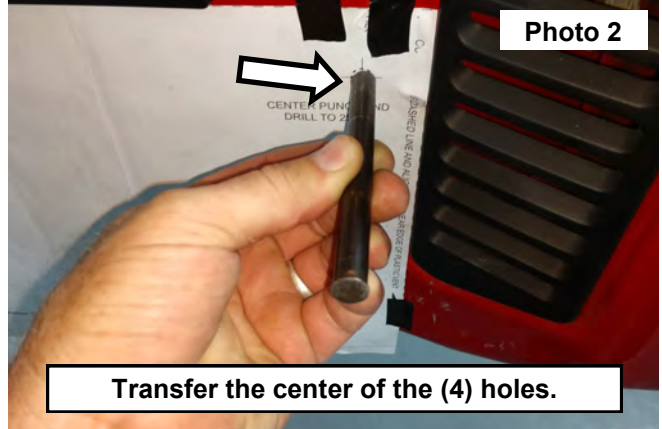
Size	Grade 5	Grade 8	Size	Class 8.8	Class 10.9
5/16"	15 ft/lbs	20ft/lbs	6MM	5ft/lbs	9ft/lbs
3/8"	30 ft/lbs	35ft/lbs	8MM	18ft/lbs	23ft/lbs
7/16"	45 ft/lbs	60ft/lbs	10MM	32ft/lbs	45ft/lbs
1/2"	65 ft/lbs	90ft/lbs	12MM	55ft/lbs	75ft/lbs
9/16"	95 ft/lbs	130ft/lbs	14MM	85ft/lbs	120ft/lbs
5/8"	135ft/lbs	175ft/lbs	16MM	130ft/lbs	165ft/lbs
3/4"	185ft/lbs	280ft/lbs	18MM	170ft/lbs	240ft/lbs



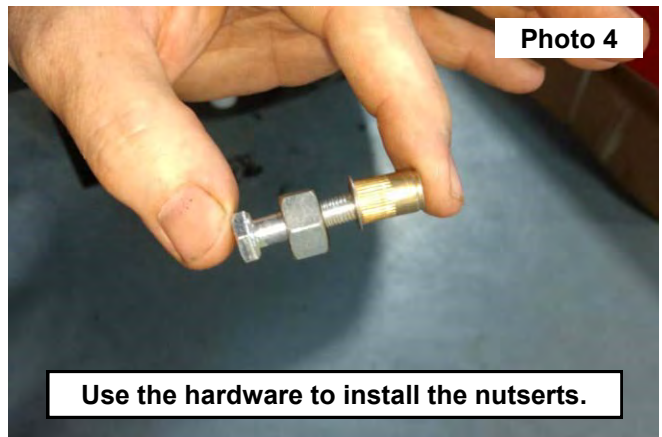
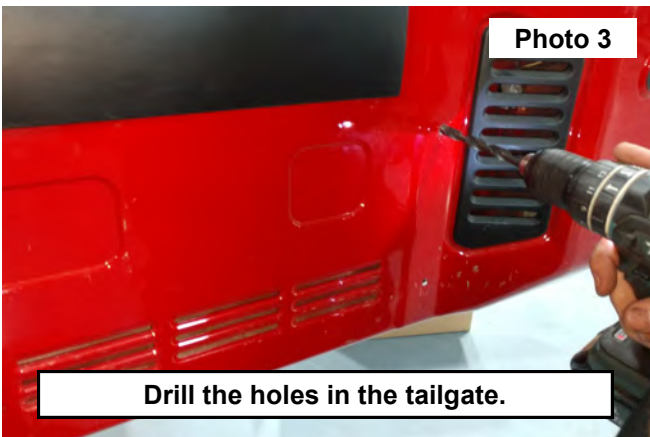
INSTALLATION INSTRUCTIONS

Jeep JK Shown for installation purposes

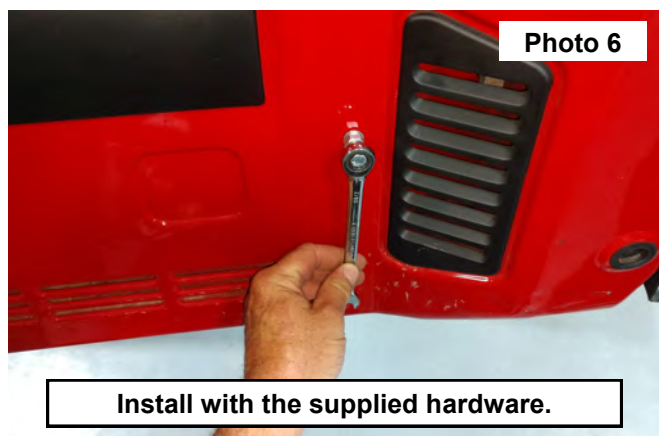
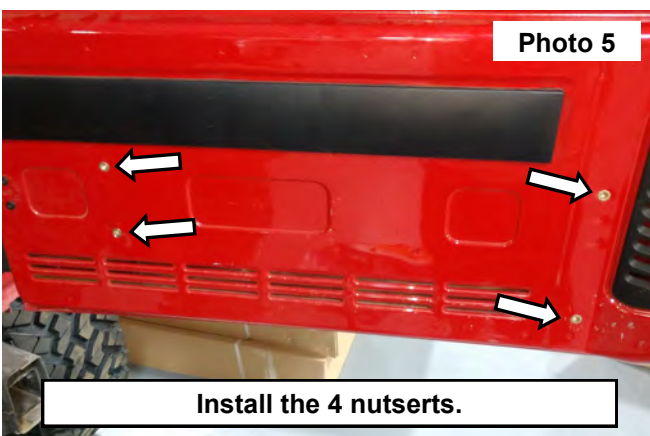
1. Center unit and follow instructions below for both applications.
2. Locate the supplied template for the inside of the tailgate, cut along the dashed line and align with the bottom edge of the black plastic cover and the near the edge of the plastic vent. Apply the template using tape. **See Photo 1.**
3. Transfer the center of the (4) holes on the template into the tailgate using a center punch. **See Photo 2.**



4. Remove the template from the tailgate and drill the (4) marked locations using a 11/32" bit. **See Photo 3.**
5. Thread the nutserts into the supplied 6mm x 25mm bolt, use a oversize nut over the bolt between the nutsert. **See Photo 4.**



6. Install the (4) nutserts into the tailgate using a 7/16 wrench or socket. **See Photos 5 and 6.**



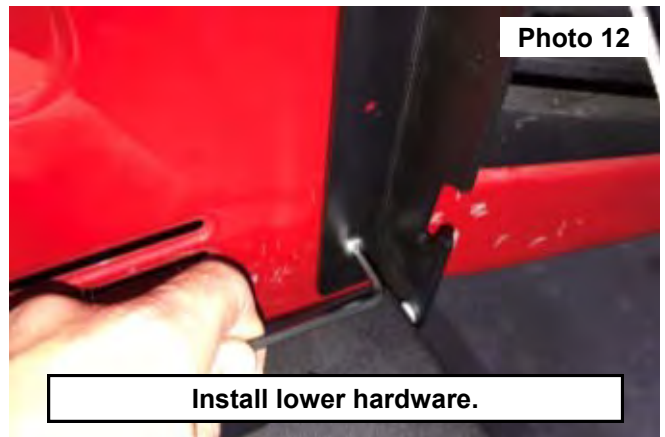
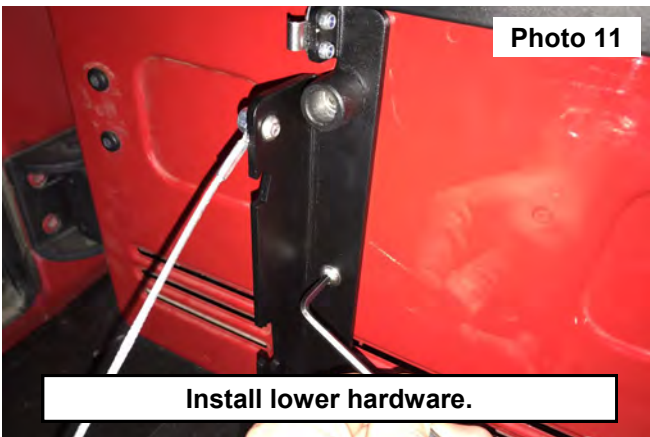
7. Place the tailgate table onto the tailgate. **See Photo 7.**
8. Locate the rubber snubber sleeve and (2) 6mm x 25mm button head allen bolt. **See Photo 8.**



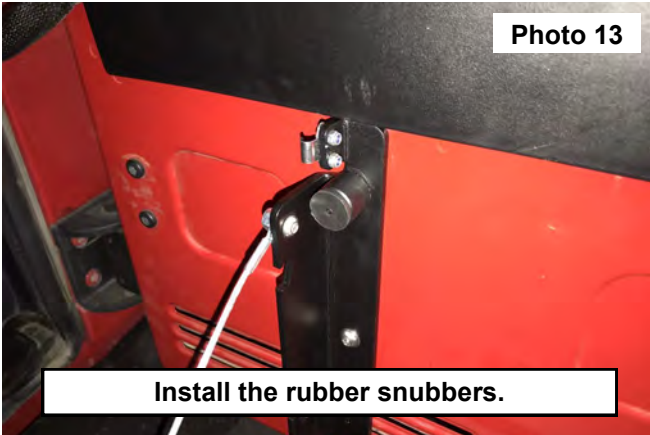
9. Install the rubber snubber sleeve and the 6mm x 25mm bolt in the upper tailgate mount using a 5mm Allen wrench. **See Photos 9 and 10.**



10. Secure the lower mounts of the bracket using (2) 6mm x 25mm button head allen bolt. Tighten using a 5mm Allen wrench **See Photos 11 and 12.**



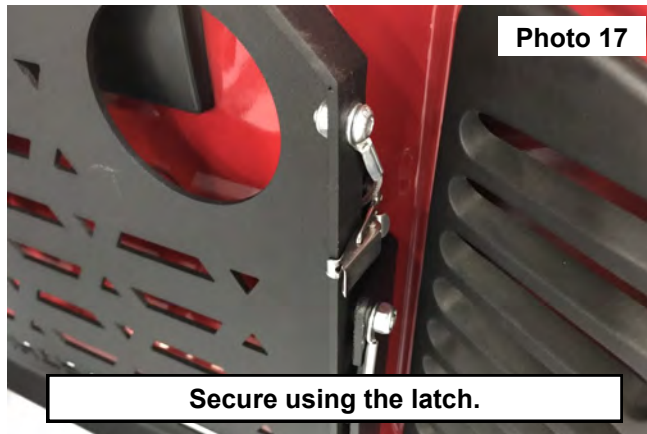
11. Install the (2) rubber snubbers into the upper mount on each tailgate mount. **See Photos 13 and 14.**



12. Shown in the open position. **See Photo 15.**
13. Shown in the closed position. **See Photo 16.**



14. Use the latch on each side of the tailgate table to secure the table in the closed position. **See Photo 17.**



By purchasing any item sold by Rough Country, LLC, the buyer expressly warrants that he/she is in compliance with all applicable, State, and Local laws and regulations regarding the purchase, ownership, and use of the item. It shall be the buyers responsibility to comply with all Federal, State and Local laws governing the sales of any items listed, illustrated or sold. The buyer expressly agrees to indemnify and hold harmless Rough Country, LLC for all claims resulting directly or indirectly from the purchase, ownership, or use of the items.

