

Bronco Tow Hook Bracket

Thank you for choosing Rough Country for all of your suspension needs.

Rough Country recommends that a certified technician install this system. In addition to these instructions, professional knowledge of disassemble/reassembly procedures as well as post installation checks must be known. Attempts to install this system without this knowledge and expertise may jeopardize the integrity and/or operating safety of the vehicle. Please read all the instructions before beginning the installation. Check the kit hardware against the "Kit Contents" list below. If question exist, please call us @1-800-222-7023. We will be happy to answer any questions concerning this product. Check all fasteners for proper torque. Check to ensure for adequate clearance between all components. Check and retighten wheels at 50 miles and again at 500 miles. Periodically check all hardware for tightness. Be sure you have all the needed parts and understand where they go. Also, please review the "Tools Needed" list to be certain you have the necessary tools to complete the installation.

PRODUCT USE INFORMATION

⚠ WARNING As a general rule, the taller a vehicle is the easier it will roll. We strongly recommend that seat belts and shoulder harnesses be worn at all times. Braking performance and capabilities are decreased when significantly larger/heavier tires and wheels are used. Do not add, alter, or fabricate any factory or after-market parts which increase vehicle height over the intended height of the Rough Country product purchased. Rough Country makes no claims regarding lifting devices and excludes any and all implied claims. We will not be responsible for any product that is altered.

NOTICE TO DEALER AND VEHICLE OWNER

⚠ NOTICE Any vehicle equipped with any Rough country product must have the "Warning to Driver" decal installed on the sun visor or dash. The decal is to act as a constant reminder for whoever is operating the vehicle of its unique handling characteristics. INSTALLING DEALER—It is your responsibility to install the warning decal and to forward these installation instructions on too the vehicle owner for review and to be kept in the vehicle for its service life.



Bronco Tow Hook Bracket

TOOLS NEEDED:
Metric Wrench/Socket
13mm
15mm

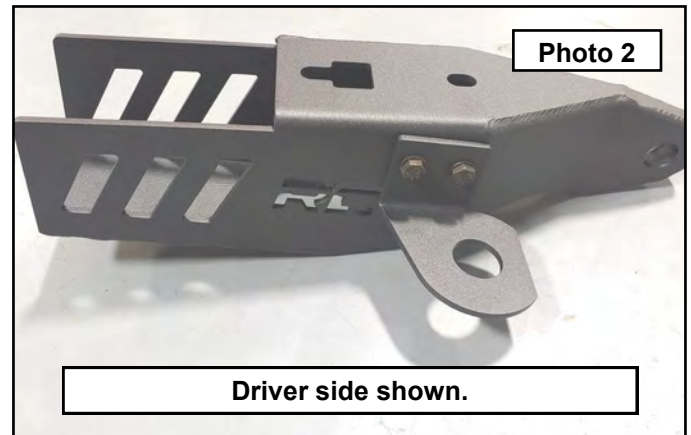
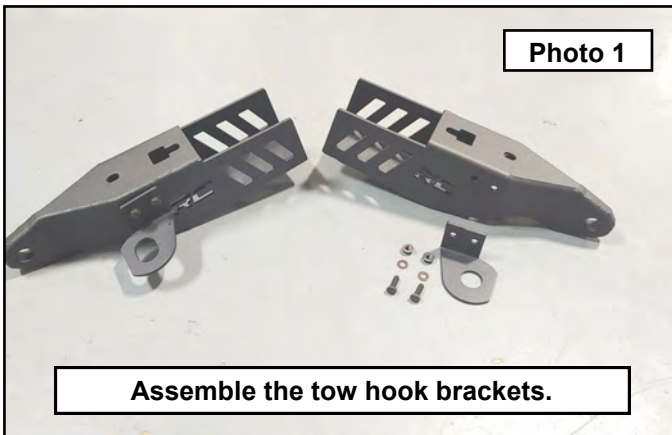
KIT CONTENTS:
Tow Hook Bracket (2)
Driver Intercooler Mount (1)
Pass Intercooler Mount (1)

HARDWARE INCLUDED:
8mm Bolt (4)
8mm Washer (4)
8mm Flange Nut (4)
10mm Flange Nut (2)
10mm Large Washer (2)

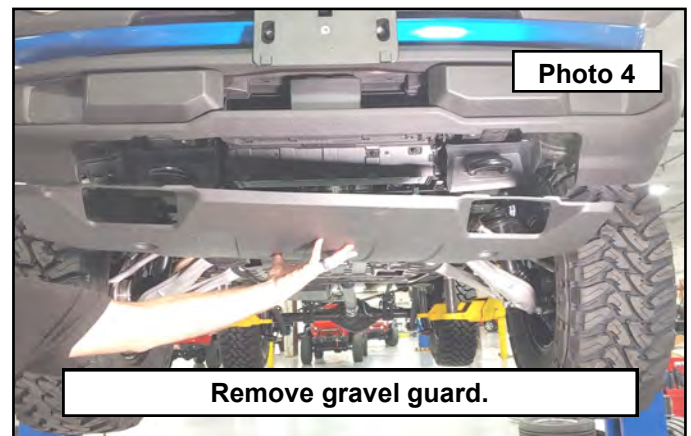
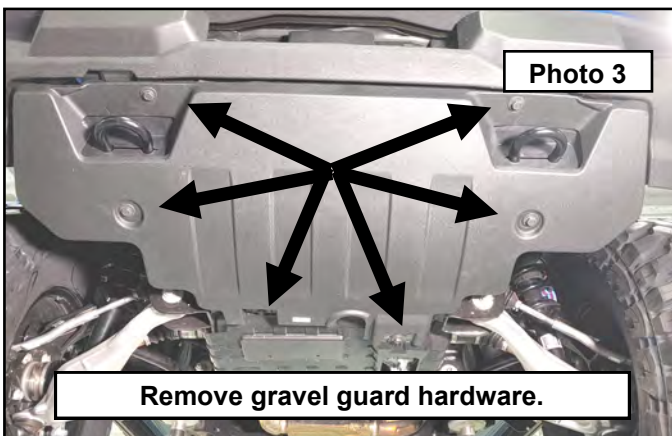


Tow Hook Bracket Installation:

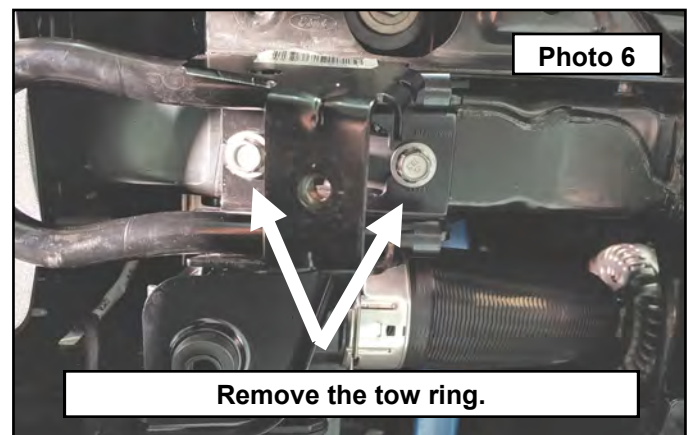
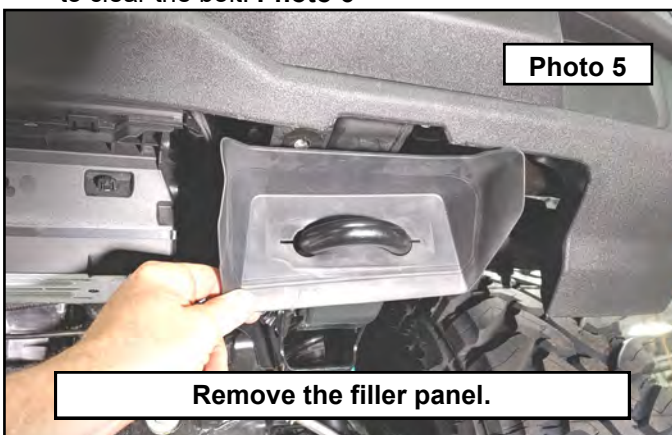
1. Park your vehicle on a clean flat surface, engage the parking brake and block the rear tires.
2. Save all hardware removed from the vehicle unless otherwise noted.
3. Assemble the driver and passenger side tow hook brackets by attaching the corresponding mounts to the side of the bracket using the provided 8mm bolts, washers, and flange nuts as shown. The brackets are universal, but the mounts are not. The driver side mount has a round hole for the intercooler mount while the passenger has a slotted hole. **Photo 1 / 2**



4. Remove the plastic gravel guard using a 15mm socket in 6 spots. **Photo 3**
5. Remove the gravel guard from the vehicle. **Photo 4**



6. Remove the factory tow ring filler panel by pulling out and away from the frame. **Photo 5**
7. Working on one side of the vehicle at a time, remove the tow ring using a 15mm socket. You can completely remove both bolts or just remove the front while backing the rearmost out about an inch and sliding the tow ring backwards to clear the bolt. **Photo 6**



8. Install the new tow hook bracket using the factory hardware using a 15mm socket. Pull the bracket as far forward as possible and torque to 45ft/lbs. Repeat the process for the other side. **Photo 7**
9. Reinstall the gravel guard over the tow hooks. You will have to “pop” it back into place over the tow hook brackets and past the bumper edge. **Photo 8**



10. Install the middle two factory bolts through the gravel guard with the factory bolts and the provided 10mm flange nuts and large washers through the opening of the tow hook bracket using a 15mm socket and 13mm wrench. Reinstall the remaining factory bolts. **Photo 9**
11. Install the D-Ring of choice to the new bracket. Rough Country forged D-Ring shown. **Photo 10**



By purchasing any item sold by Rough Country, LLC, the buyer expressly warrants that he/she is in compliance with all applicable , State, and Local laws and regulations regarding the purchase, ownership, and use of the item. It shall be the buyers responsibility to comply with all Federal, State and Local laws governing the sales of any items listed, illustrated or sold. The buyer expressly agrees to indemnify and hold harmless Rough Country, LLC for all claims resulting directly or indirectly from the purchase, ownership, or use of the items.